

“PULSE* 120” – SG-1A**ELECTRONIC PRIVATE AUTOMATIC BRANCH EXCHANGE****INCOMING TRUNK CALL FAULT-CLEARING PROCEDURE****1. GENERAL**

1.01 This section describes the procedure for clearing faults on incoming trunk calls to the attendant console and on direct inward-dialed trunk calls to the PULSE 120 Electronic Private Automatic Branch Exchange (EPABX).

2. TRUNK CONNECTOR ARRANGEMENT

2.01 Trunks 11 through 30 are connected directly to the trunk shelves from the connector panel. The ten Power Fail Transfer (PFT) trunks 1 through 10 are connected to trunk shelf no. 1 via the PFT relays in the base of the cabinet. A schematic drawing of the PFT trunk circuits is given in Fig. 1 and the identification of leads and pins on the PFT panel is given in Fig. 2.

2.02 When a line shelf no. 1, trunk shelf no. 1, or the PFT assembly is substituted, the emergency station lines and trunks must be bridged at the connector panel using the emergency connector cable PO519592.

2.03 The lead assignments in the connector cables J090 and J120, which go from the cross-connecting terminal to the connector panel, are listed in Table A.

2.04 The trunk circuit number associated with each connector is listed in the trunk record chart (Section 553-5011-207) located in the EPABX cabinet.

3. FAULT-CLEARING PROCEDURES

3.01 Faults affecting outgoing trunk calls must be cleared before attempting to correct faults affecting incoming trunk calls.

3.02 When the substitution of a circuit pack is required during the fault-clearing procedure, the contacts on the new circuit pack must be cleaned as described in Section 553-5011-500 before inserting the circuit pack into the connector.

3.03 If a fault is cleared by circuit pack substitution and *the original circuit-pack has not caused a fuse to blow and/or there is no visual evidence of burnt or damaged components*, the contacts on this circuit pack and its associated connector must be cleaned. The original circuit pack is then reinserted in the connector and if the fault reappears the new circuit pack is reinserted.

Note: The asterisk (*) after the circuit pack code replaces the suffix letter.

3.04 If different and/or additional faults are created in the system by substituting a circuit pack, the replacement must be tagged and returned as a defective unit.

3.05 If the fault is not cleared by substitution of a circuit pack, the original circuit pack must be reinserted in the connector.

3.06 The instructions for substituting a shelf are given in Section 553-5011-202.

3.07 When the fault-clearing procedure is completed, a visual check must be made to ensure that all circuit packs are well seated in their connector and screws are tight in connector plugs and jacks. The EPABX internal cable arrangement is given in Section 553-5011-501.

* Trademark of Northern Telecom Limited

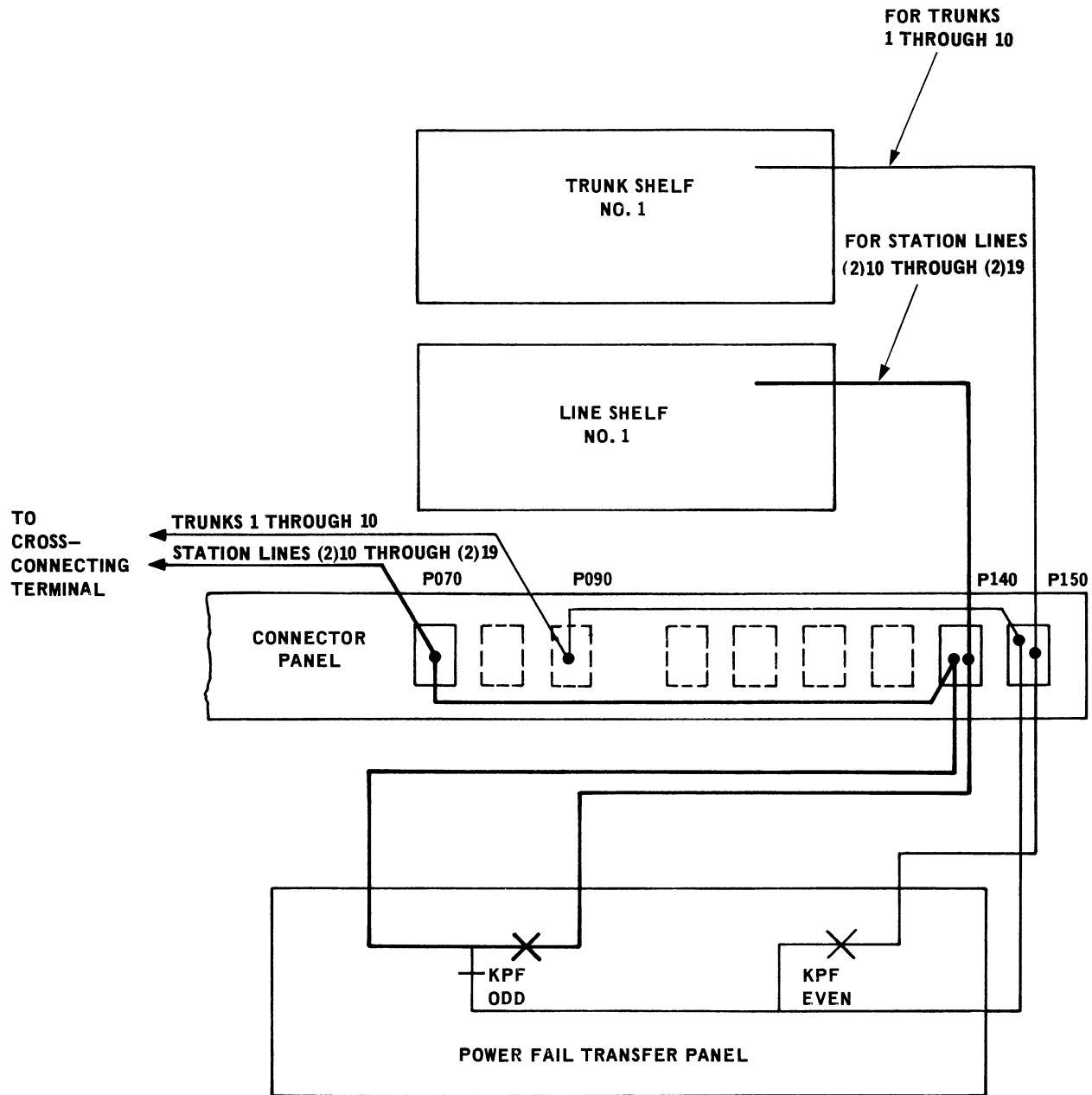


Fig. 1 - Schematic Drawing of Power Fail Transfer Trunk Circuits

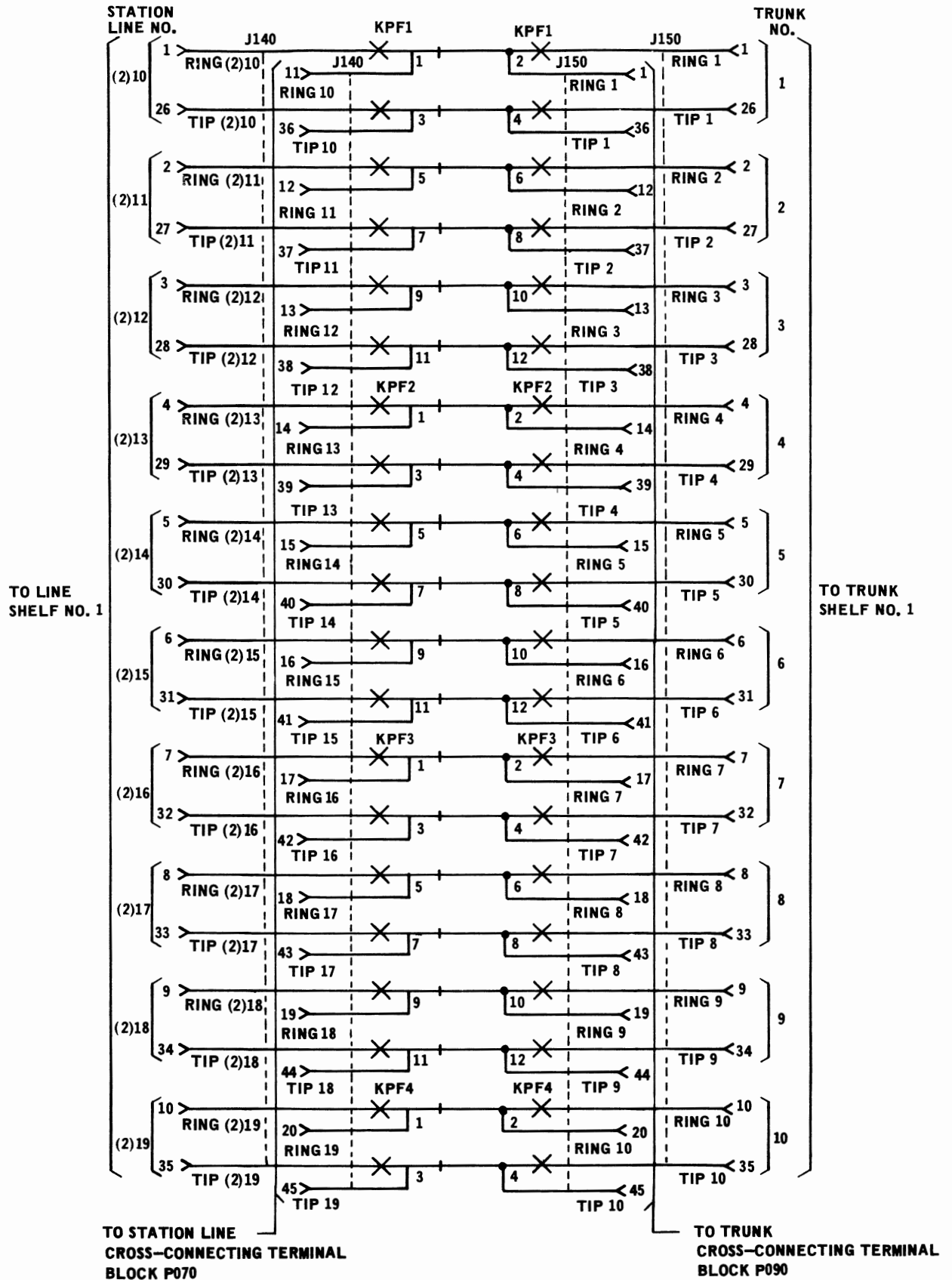


Fig. 2 - Identification of Leads and Pins on PFT Panel

**TABLE A
LEAD ASSIGNMENT IN CONNECTOR CABLE**

TRUNK SHELF NO. 1 – TRUNKS 1 TO 15 (J090)

	PAIR	PIN	PAIR COLOR	LEAD DESIGNATION	USAGE
GREEN BINDER OF CONNECTOR CABLE FROM CABINET PLUG P090 TERMINATED ON CONNECTING BLOCK P090	1T	26	W-BL	Trunk 1	CO or DID Trunk
	R	1	BL-W		
	2T	27	W-O	" 2	"
	R	2	O-W		
	3T	28	W-G	" 3	"
	R	3	G-W		
	4T	29	W-BR	" 4	"
	R	4	BR-W		
	5T	30	W-S	" 5	"
	R	5	S-W		
	6T	31	R-BL	" 6	"
	R	6	BL-R		
	7T	32	R-O	" 7	"
	R	7	O-R		
	8T	33	R-G	" 8	"
	R	8	G-R		
	9T	34	R-BR	" 9	"
	R	9	BR-R		
	10T	35	R-S	" 10	"
	R	10	S-R		
	11T	36	BK-BL	" 11	Miscellaneous Trunk
	R	11	BL-BK		
	12T	37	BK-O	" 12	"
	R	12	O-BK		
	13T	38	BK-G	" 13	"
	R	13	G-BK		
	14T	39	BK-BR	" 14	"
	R	14	BR-BK		
	15T	40	BK-S	" 15	"
	R	15	S-BK		
16T	41	Y-BL	T-L	PFT Alarm at CO through loop circuit	
R	16	BL-Y	R-L		
17T	42	Y-O	T-GRD	PFT Alarm at CO through battery circuit	
R	17	O-Y	R-BAT		
18T	43	Y-G	B1/E 11	Miscellaneous and Paging Trunk Signaling Leads, one pair required for music on Hold (QPJ181-type circuit pack)	
R	18	G-Y	A1/M		
19T	44	Y-BR	B1/E 12		
R	19	BR-Y	A1/M		
20T	45	Y-S	B1/E 13		
R	20	S-Y	A1/M		
21T	46	V-BL	B1/E 14		
R	21	BL-V	A1/M		
22T	47	V-O	B1/E 15		
R	22	O-V	A1/M		
23T	48	V-G	S 12	S Lead for Dict. Trk 12 S Lead for Dict. Trk 13	
R	23	G-V	S 13		
24T	49	V-BR		} Spare	
R	24	BR-V			
25T	50	V-S	TAFAS – G	} To External Ringing Circuit	
R	25	S-V	TAFAS – R		

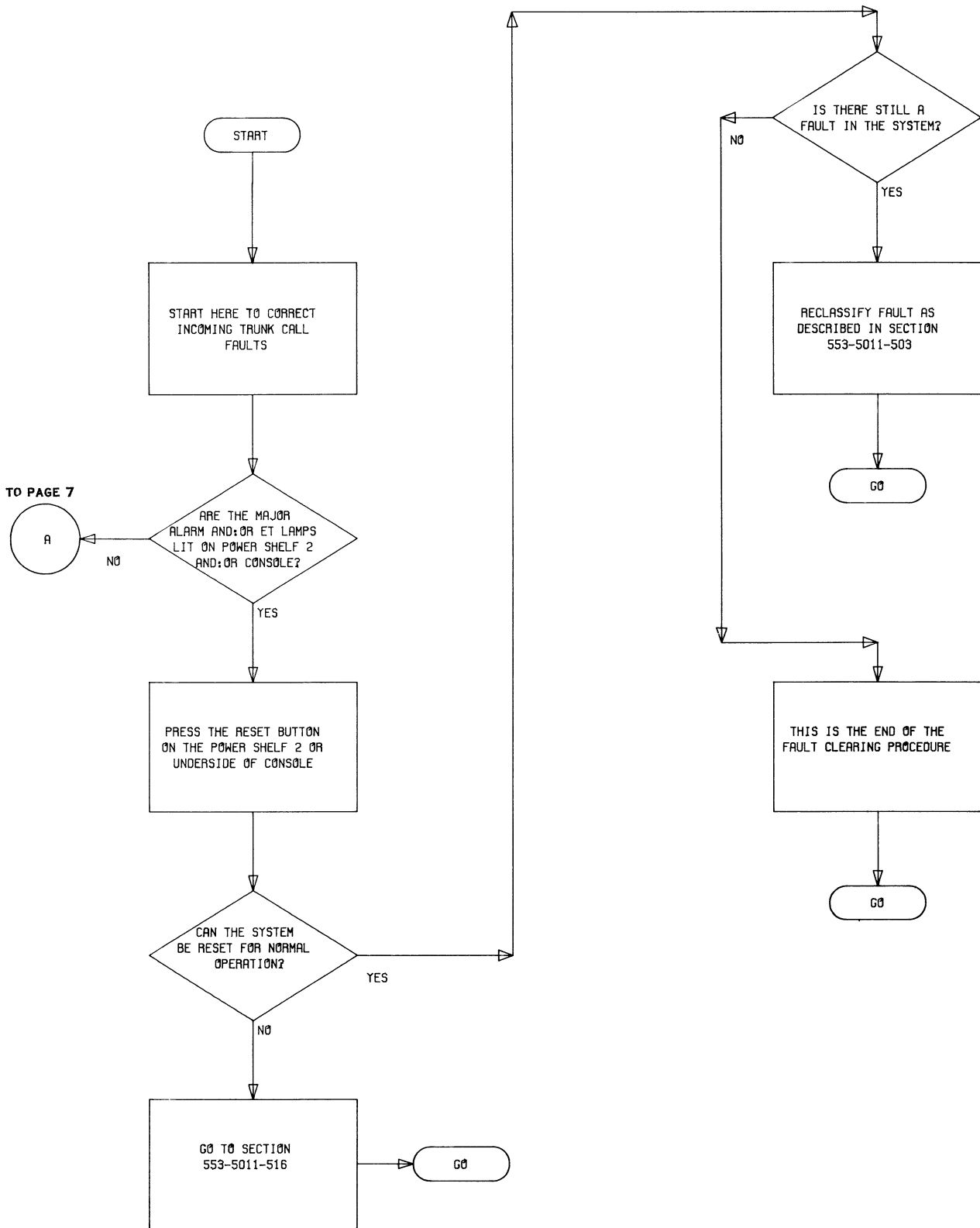
TABLE A (Cont)
LEAD ASSIGNMENT IN CONNECTOR CABLE

TRUNK SHELF NO. 2 – TRUNKS 16 TO 30 (J120)

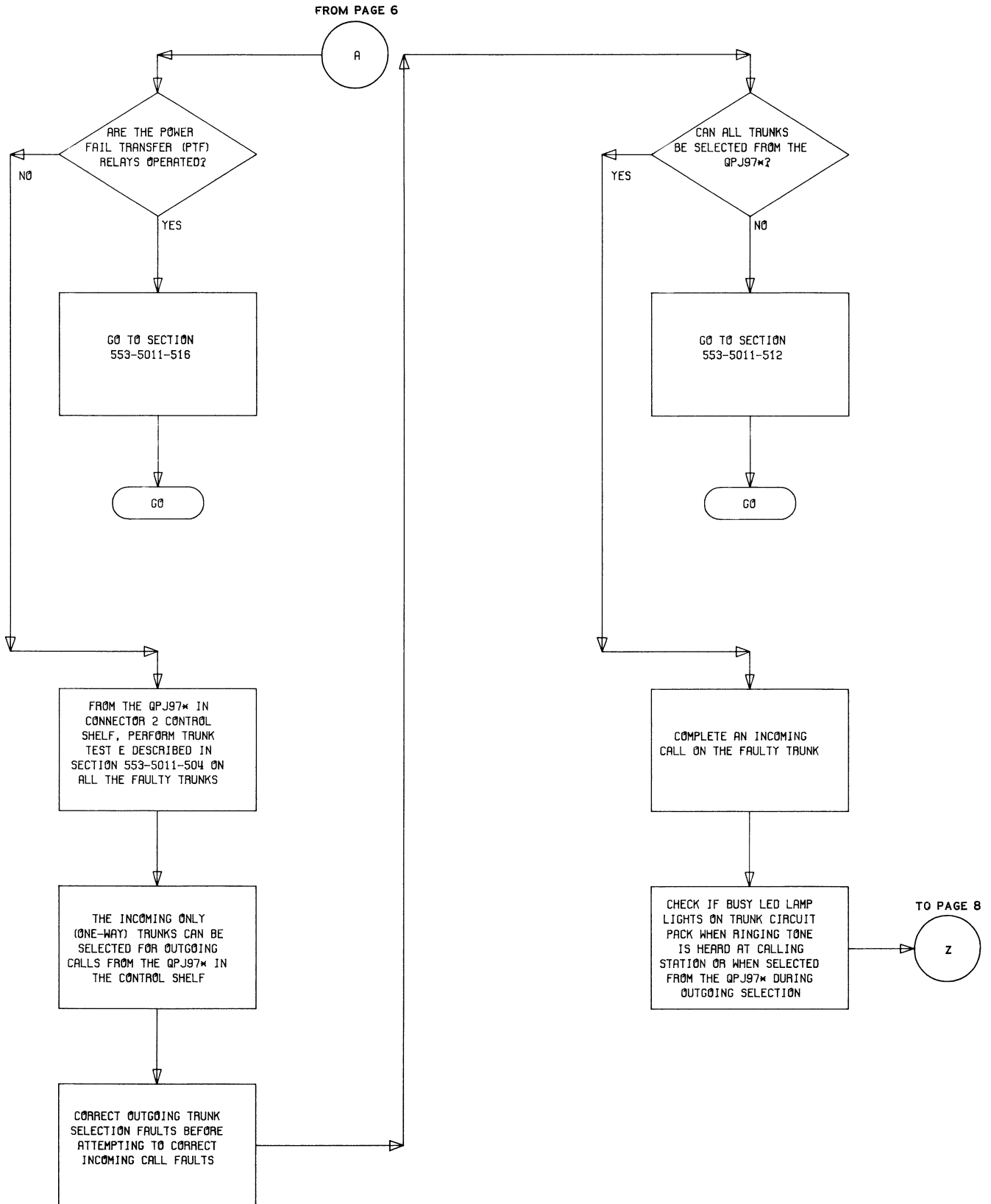
PAIR	PIN	PAIR COLOR	LEAD DESIGNATION	USAGE
1T	26	W-BL	Trunk 16	CO or DID Trunk
R	1	BL-W		
2T	27	W-O	" 17	
R	2	O-W		
3T	28	W-G	" 18	
R	3	G-W		
4T	29	W-BR	" 19	
R	4	BR-W		
5T	30	W-S	" 20	
R	5	S-W		
6T	31	R-BL	" 21	Miscellaneous Trunk
R	6	BL-R		
7T	32	R-O	" 22	
R	7	O-R		
8T	33	R-G	" 23	
R	8	G-R		
9T	34	R-BR	" 24	
R	9	BR-R		
10T	35	R-S	" 25	
R	10	S-R		
11T	36	BK-BL	" 26	Miscellaneous Trunk Signaling Leads, one pair required for music on hold (QPJ181-type circuit pack)
R	11	BL-BK		
12T	37	BK-O	" 27	
R	12	O-BK		
13T	38	BK-G	" 28	
R	13	G-BK		
14T	39	BK-BR	" 29	
R	14	BR-BK		
15T	40	BK-S	" 30	
R	15	S-BK		
16T	41	Y-BL	B1/E } 26	Miscellaneous Trunk Signaling Leads, one pair required for music on hold (QPJ181-type circuit pack)
R	16	BL-Y	A1/M }	
17T	42	Y-O	B1/E } 27	
R	17	O-Y	A1/M }	
18T	43	Y-G	B1/E } 28	
R	18	G-Y	A1/M }	
19T	44	Y-BR	B1/E } 29	
R	19	BR-Y	A1/M }	
20T	45	Y-S	B1/E } 30	
R	20	S-Y	A1/M }	
21T	46	V-BL		Spare
R	21	BL-V		
22T	47	V-O		
R	22	O-V		
23T	48	V-G		
R	23	G-V		
24T	49	V-BR		
R	24	BR-V		
25T	50	V-S		
R	25	S-V		

GREEN BINDER OF CONNECTOR CABLE FROM CABINET
PLUG P120 TERMINATED ON CONNECTING BLOCK P120

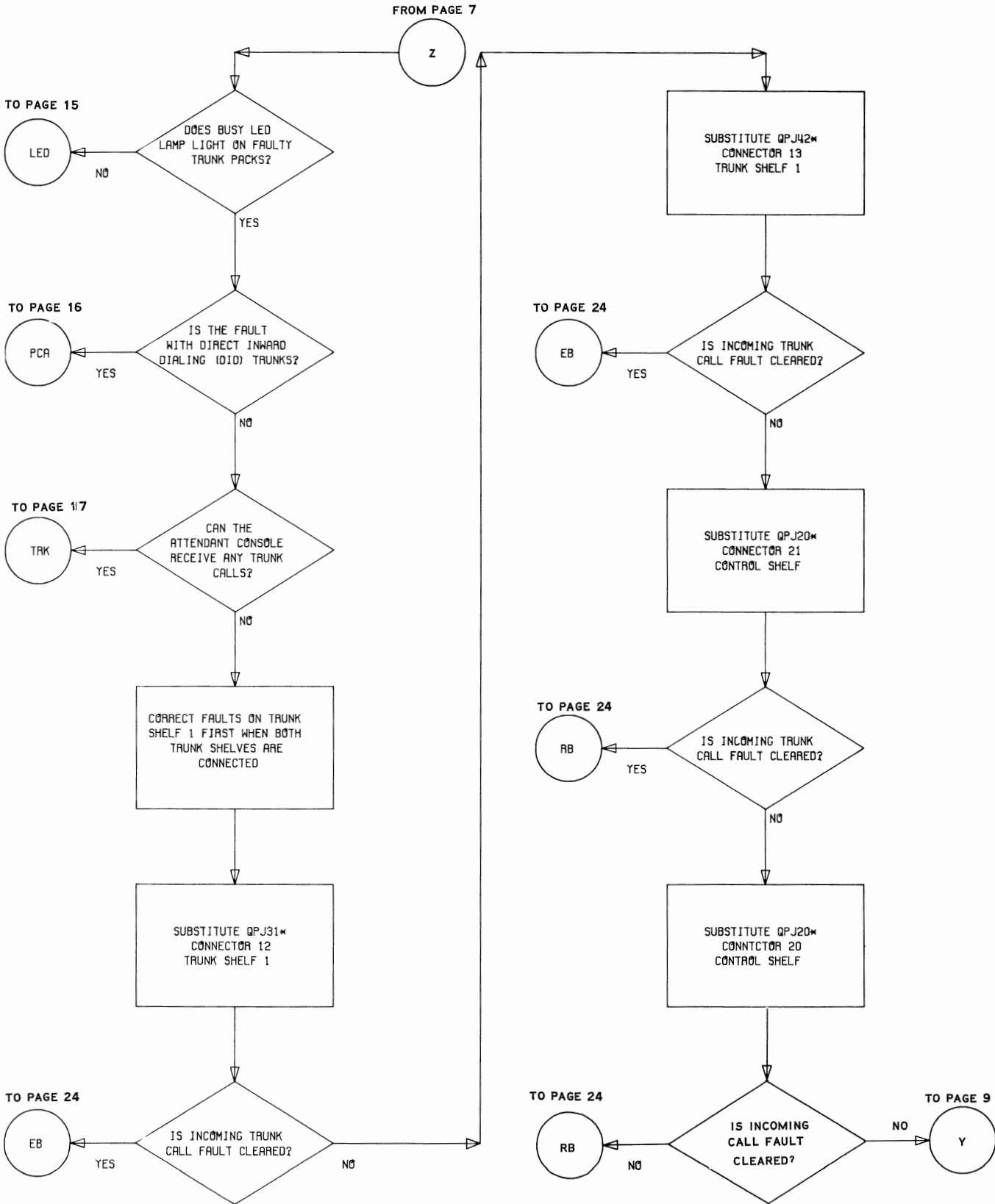




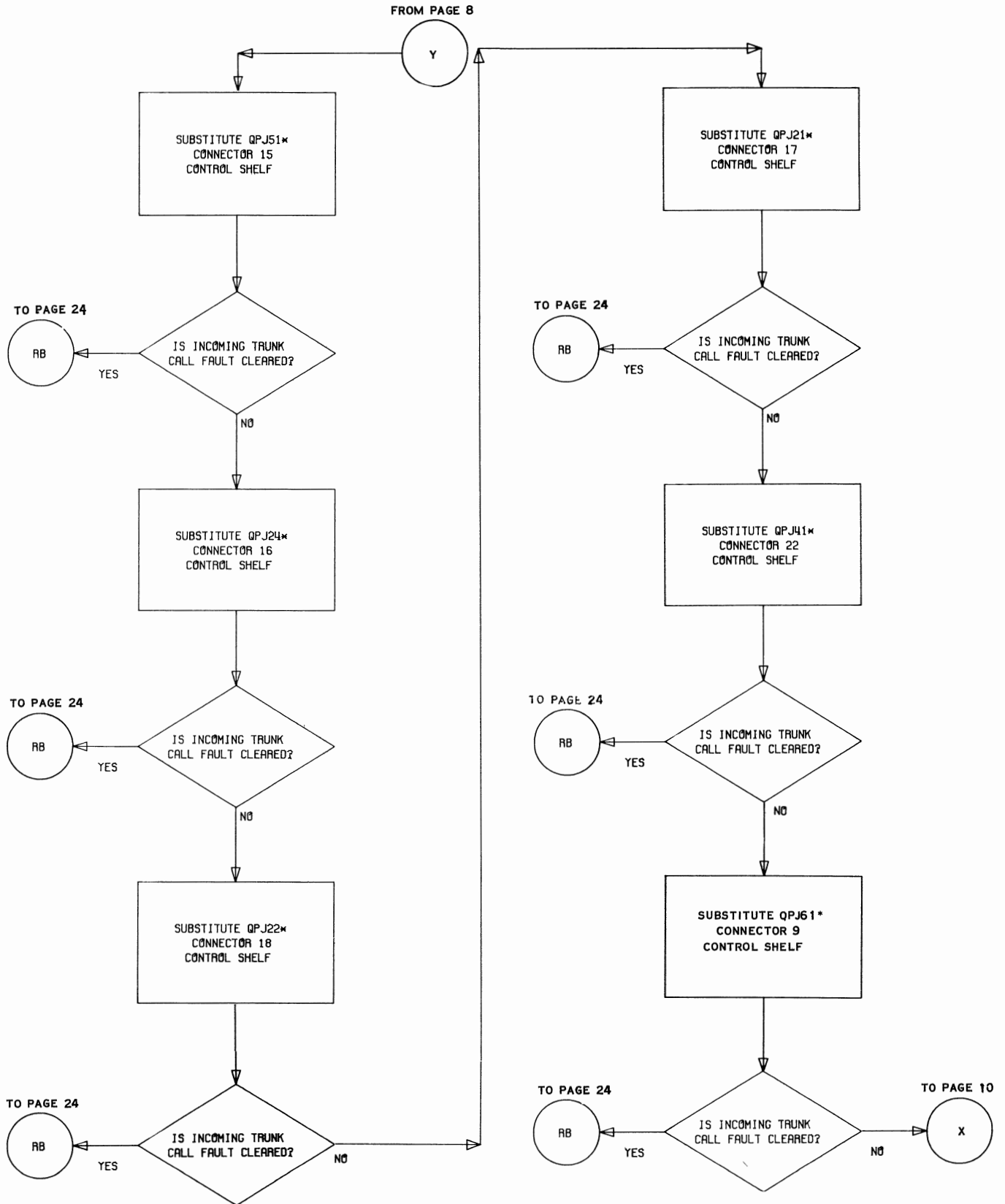
Flowchart 1 — Incoming Trunk Call Fault-Clearing Procedure



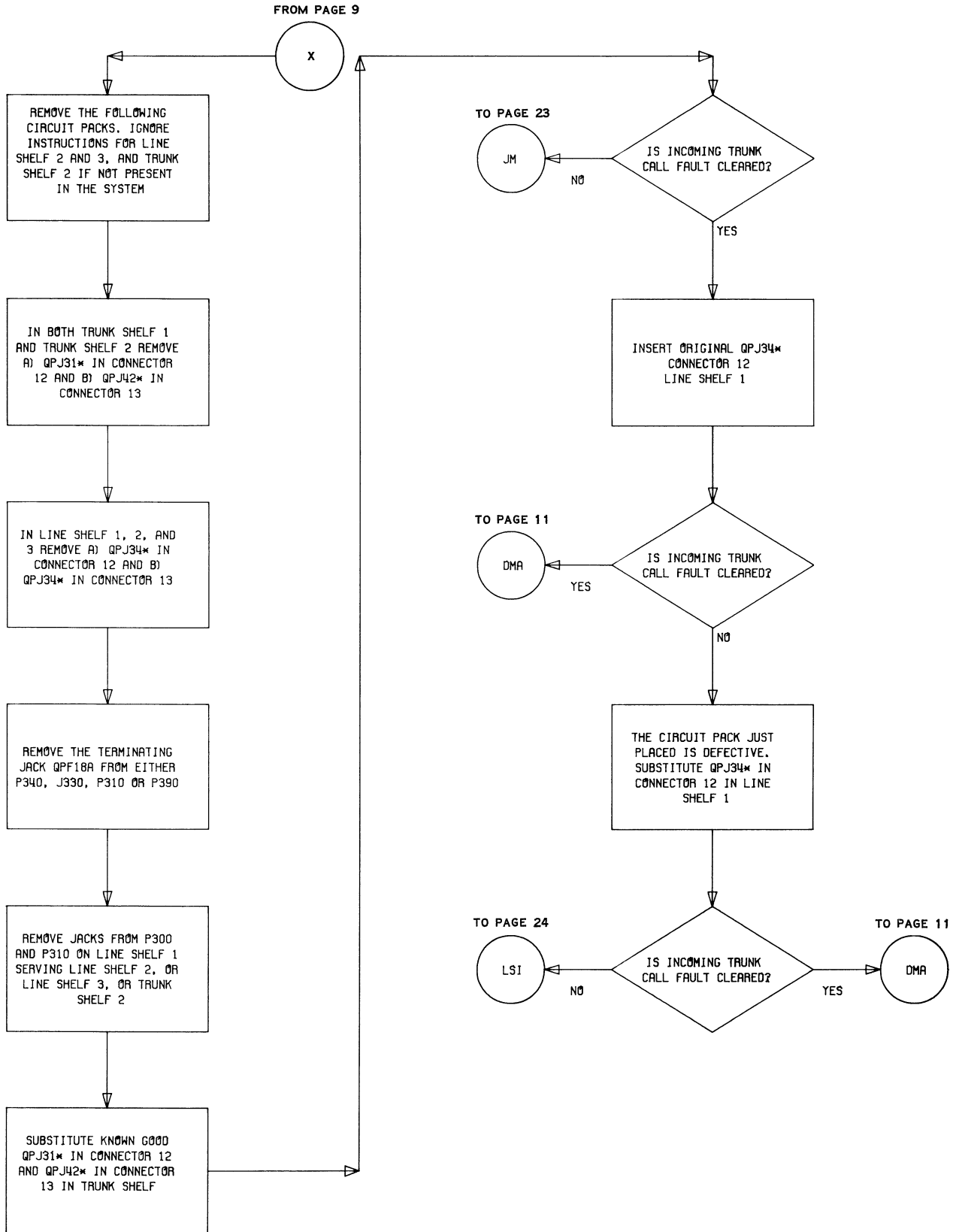
Flowchart 1 (Cont)



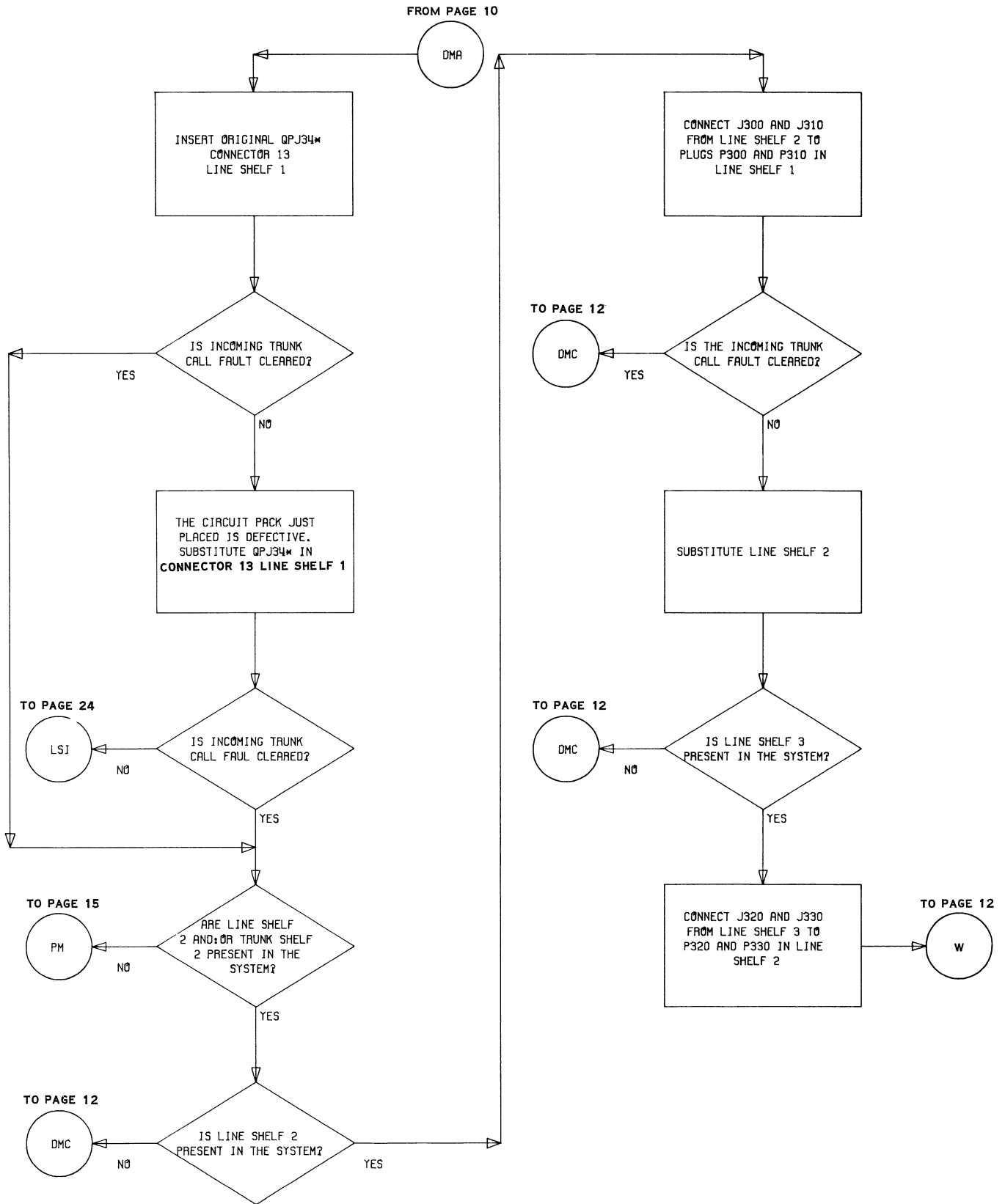
Flowchart 1 (Cont)



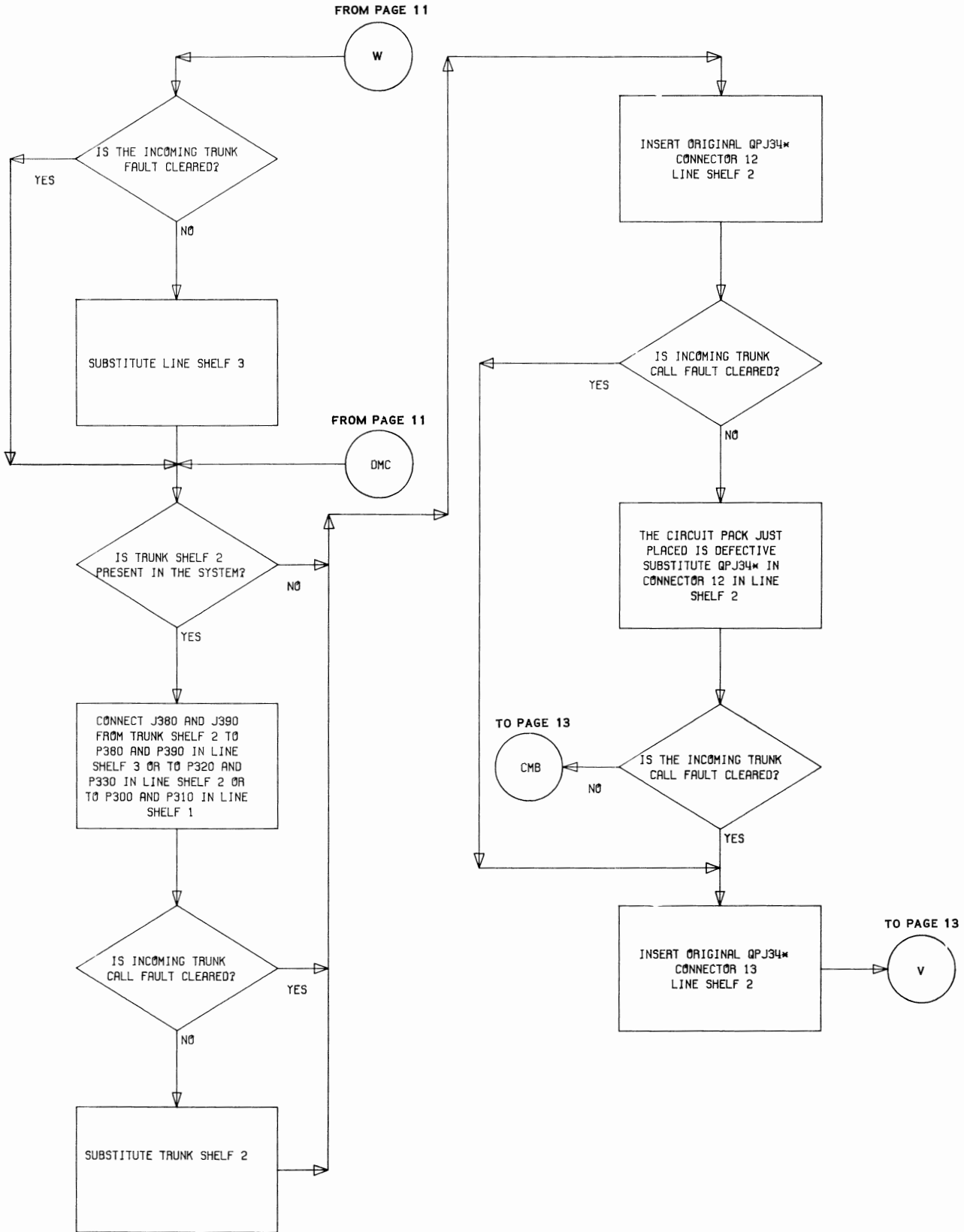
Flowchart 1 (Cont)



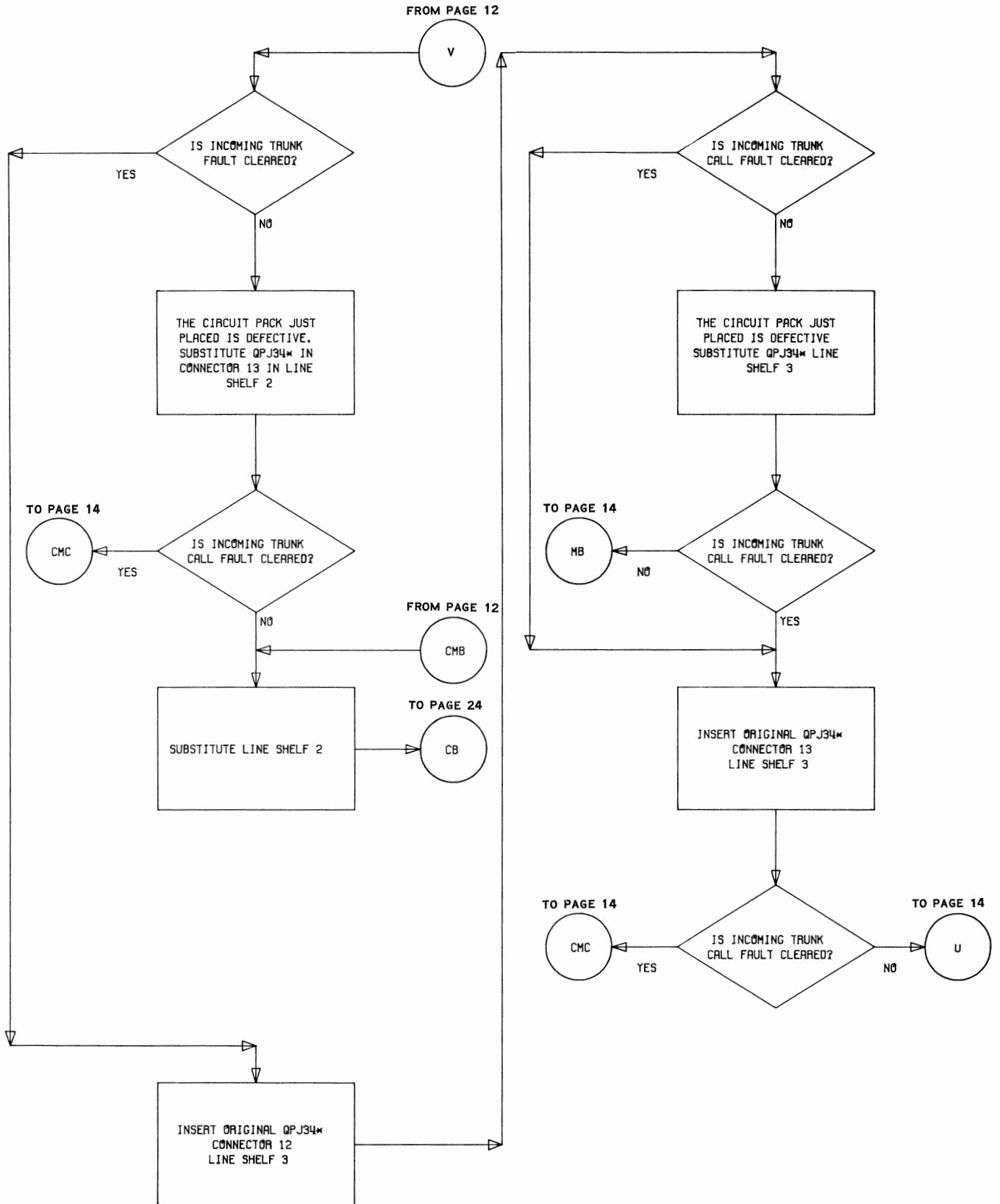
Flowchart 1 (Cont)



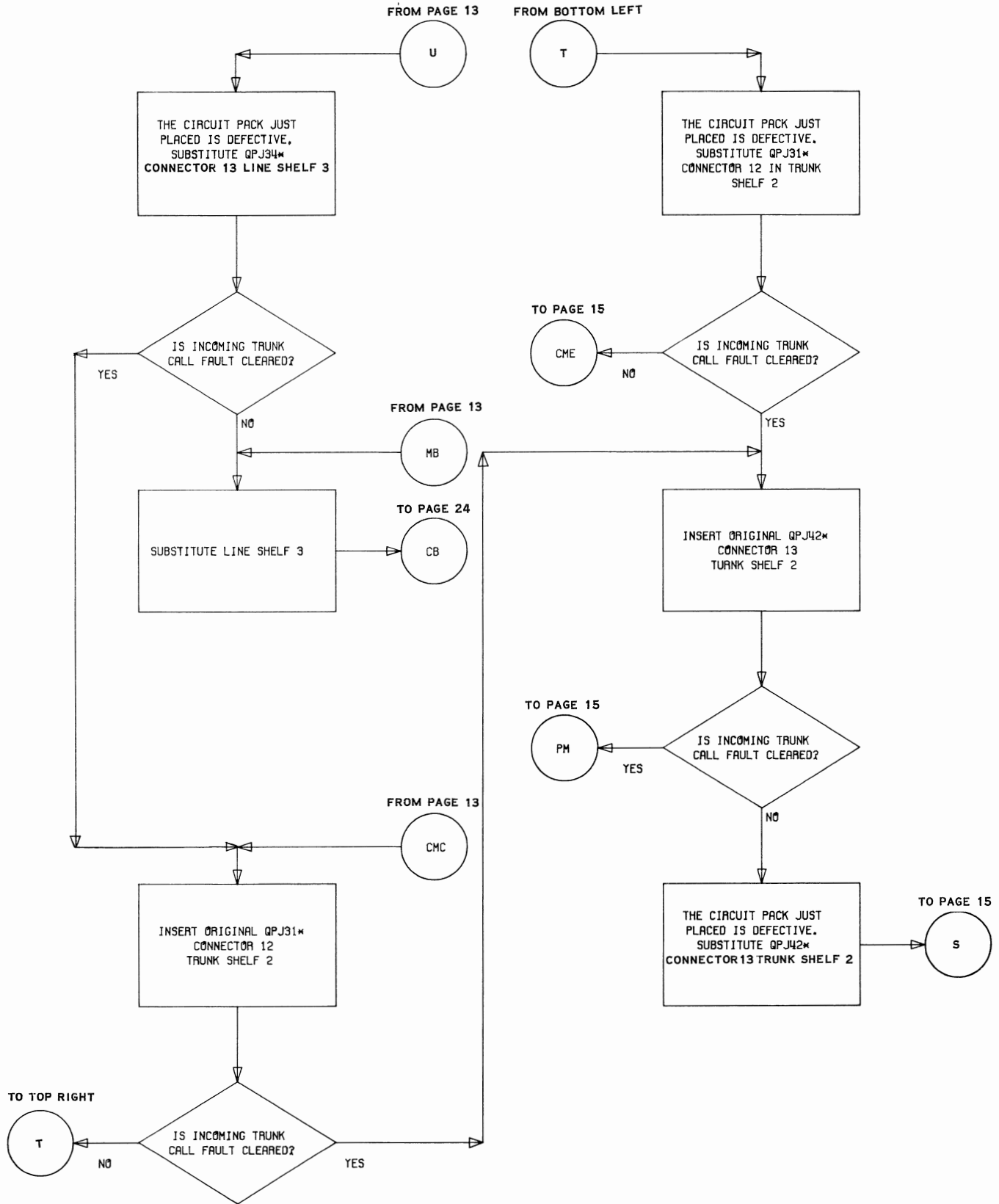
Flowchart 1 (Cont)



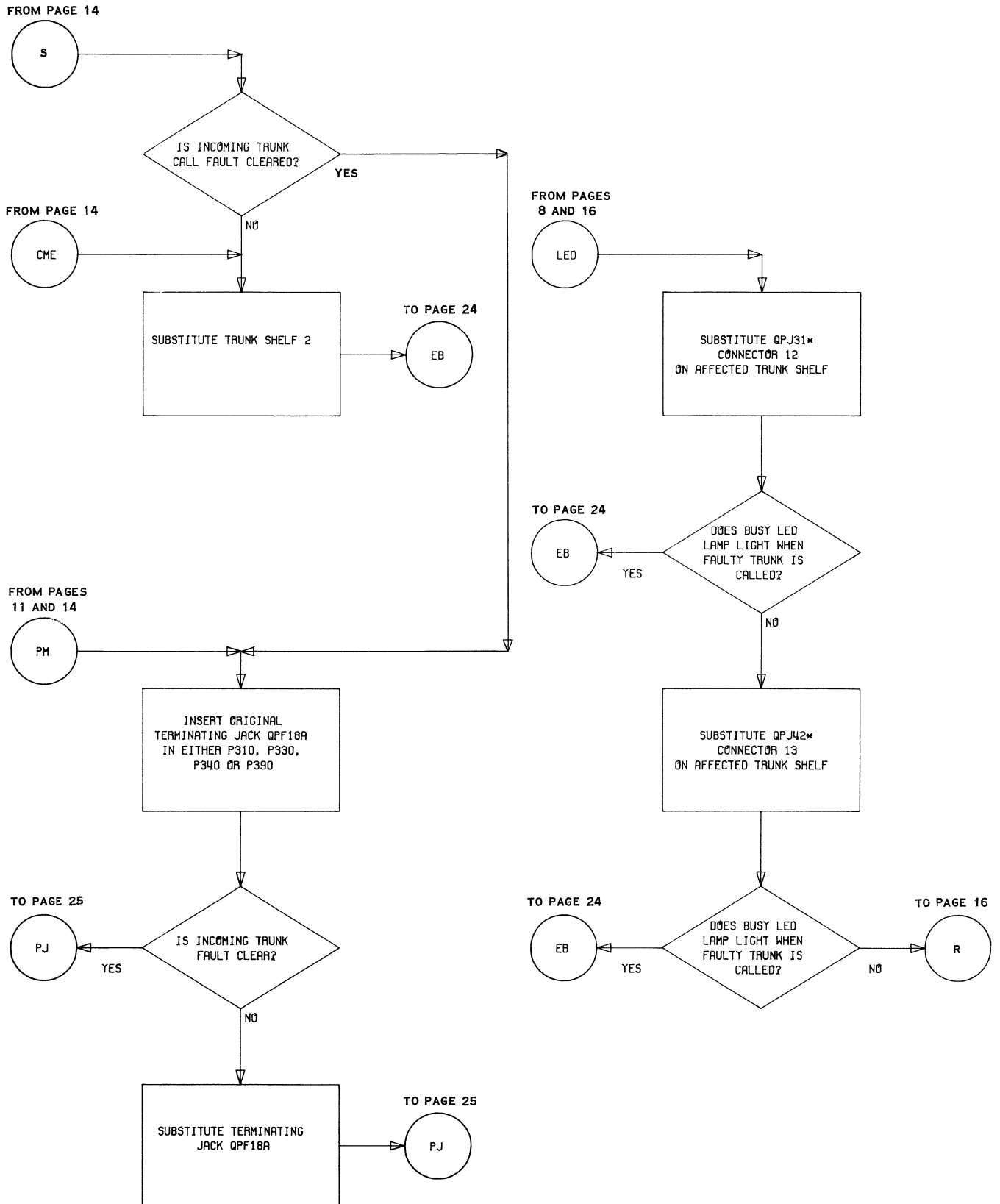
Flowchart 1 (Cont)



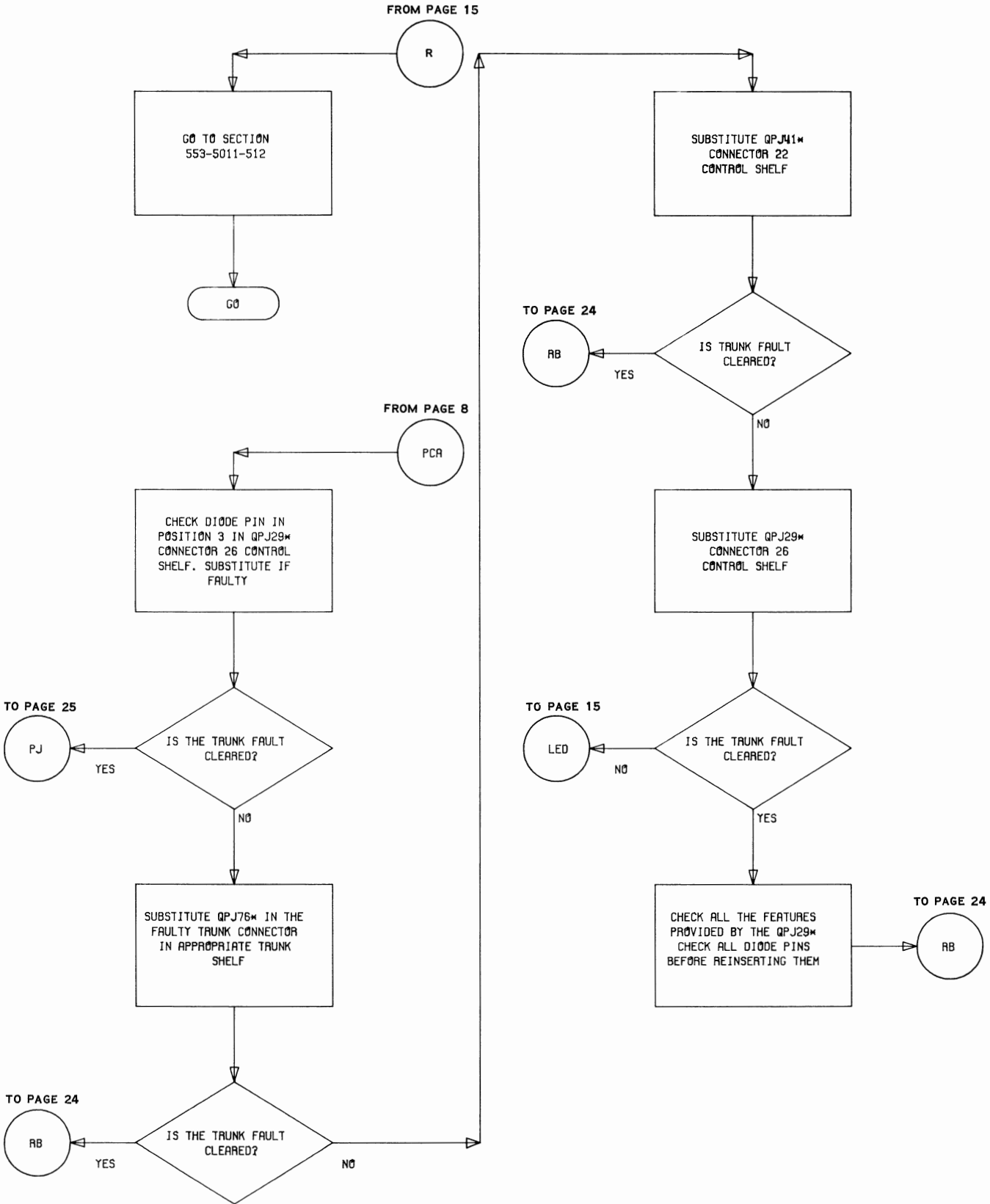
Flowchart 1 (Cont)



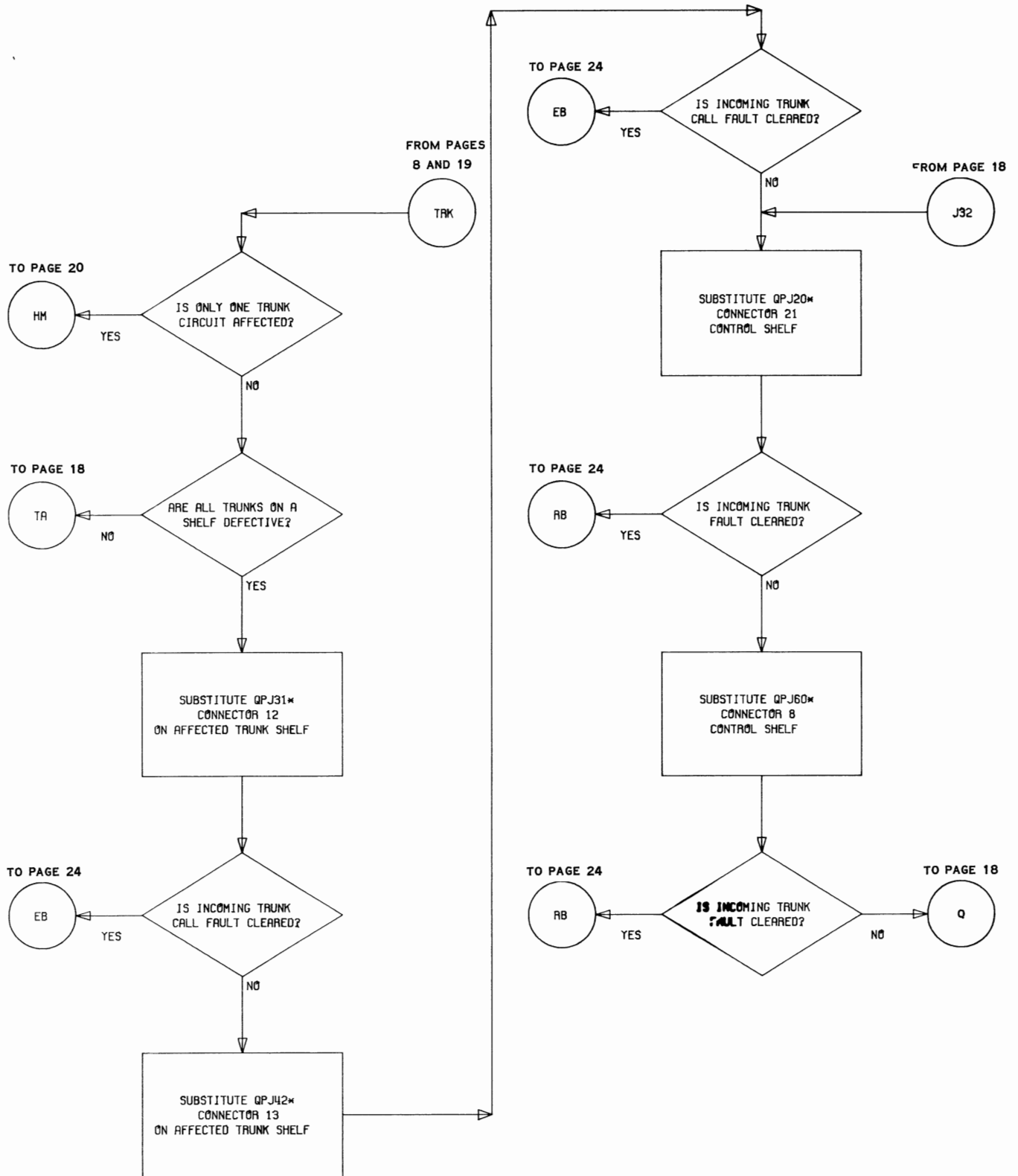
Flowchart 1 (Cont)



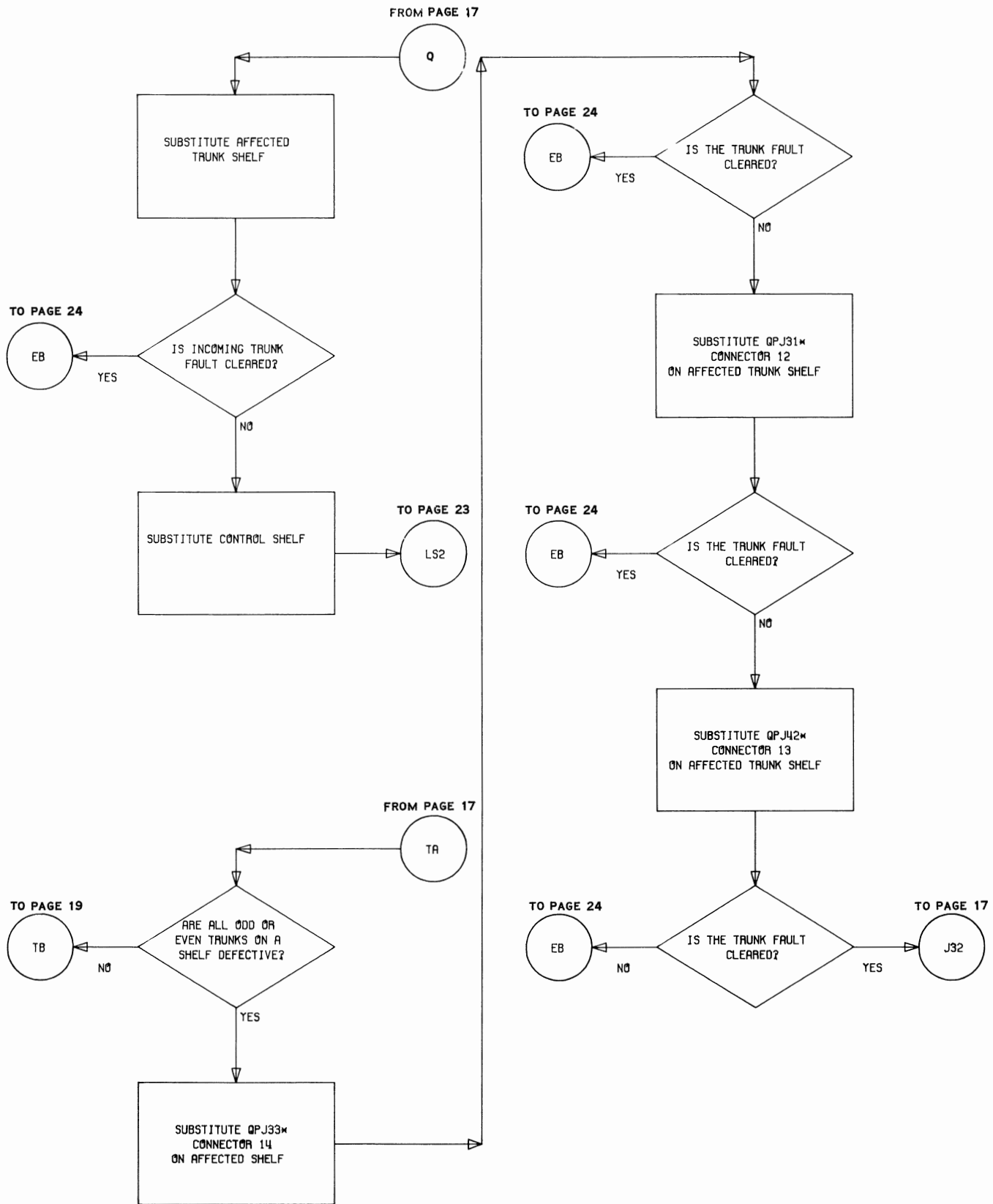
Flowchart 1 (Cont)



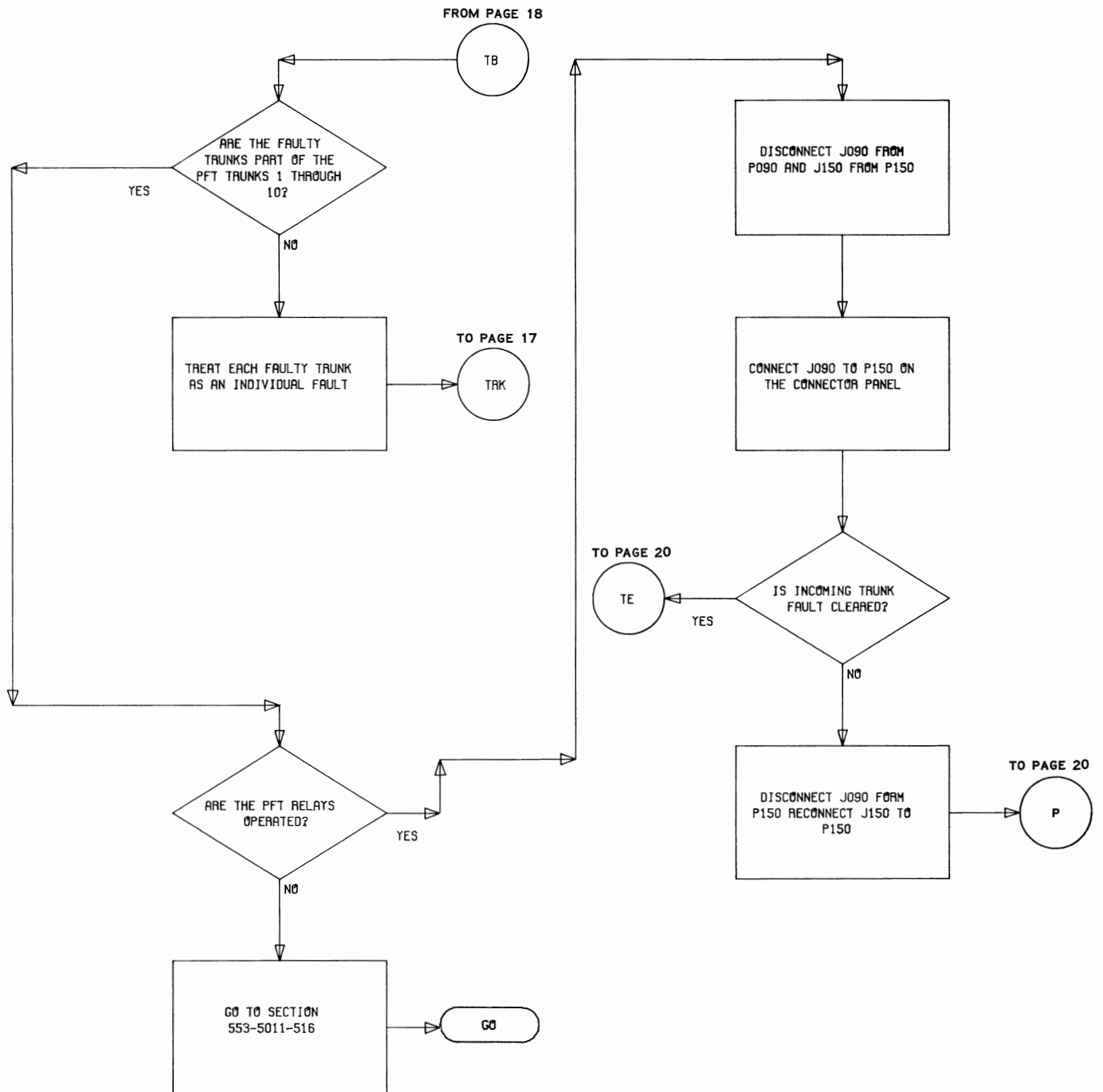
Flowchart 1 (Cont)



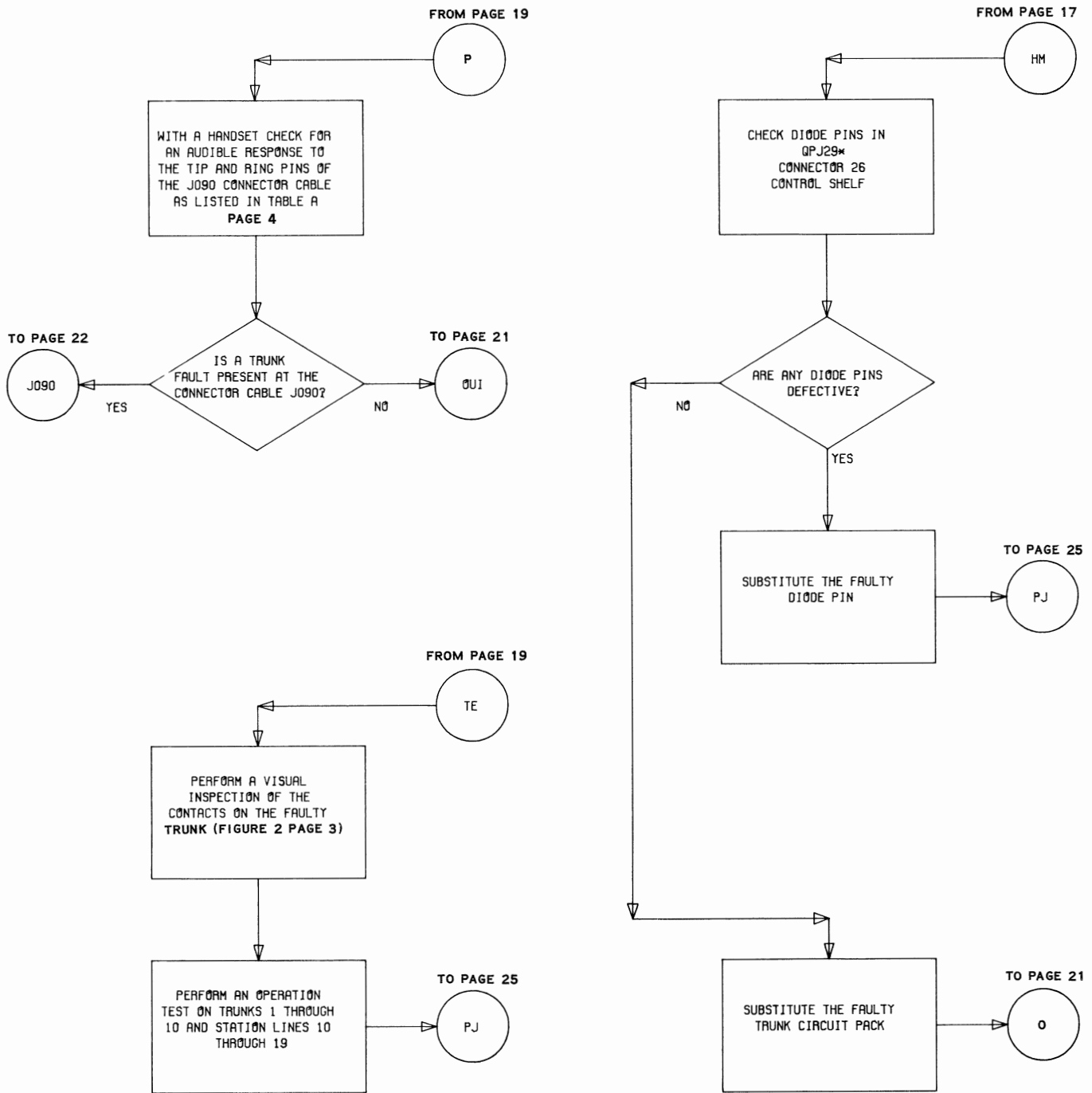
Flowchart 1 (Cont)



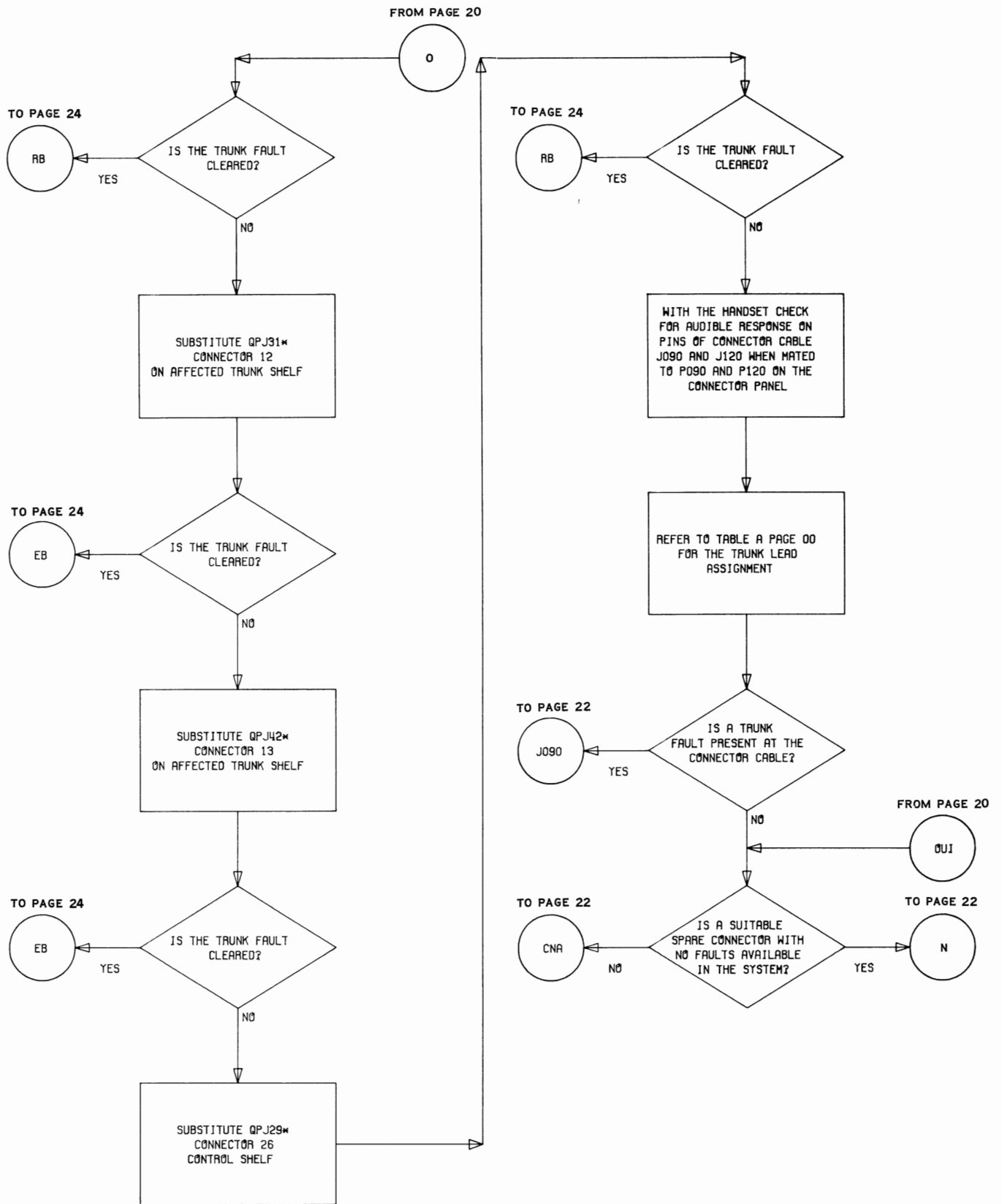
Flowchart 1 (Cont)



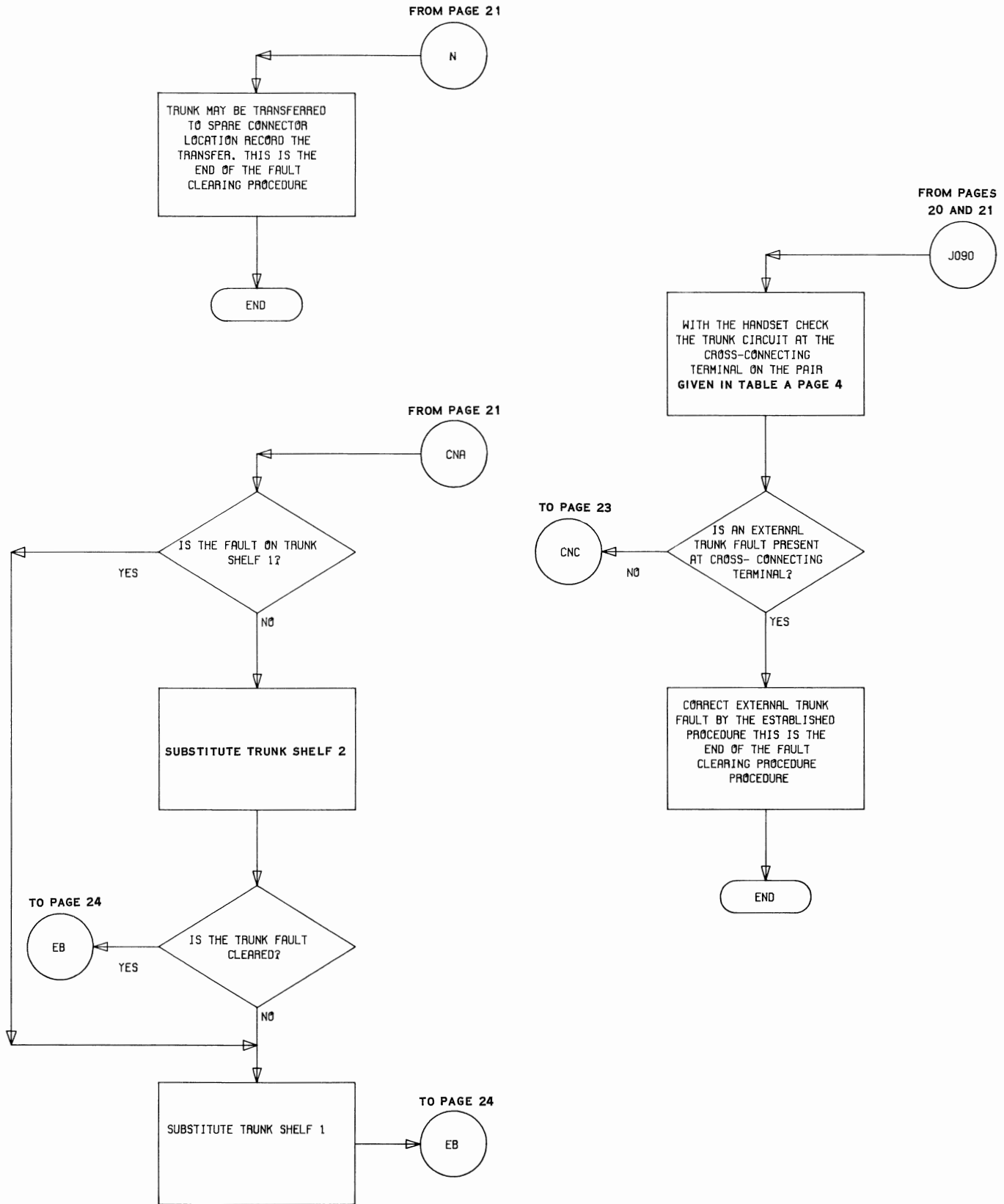
Flowchart 1 (Cont)



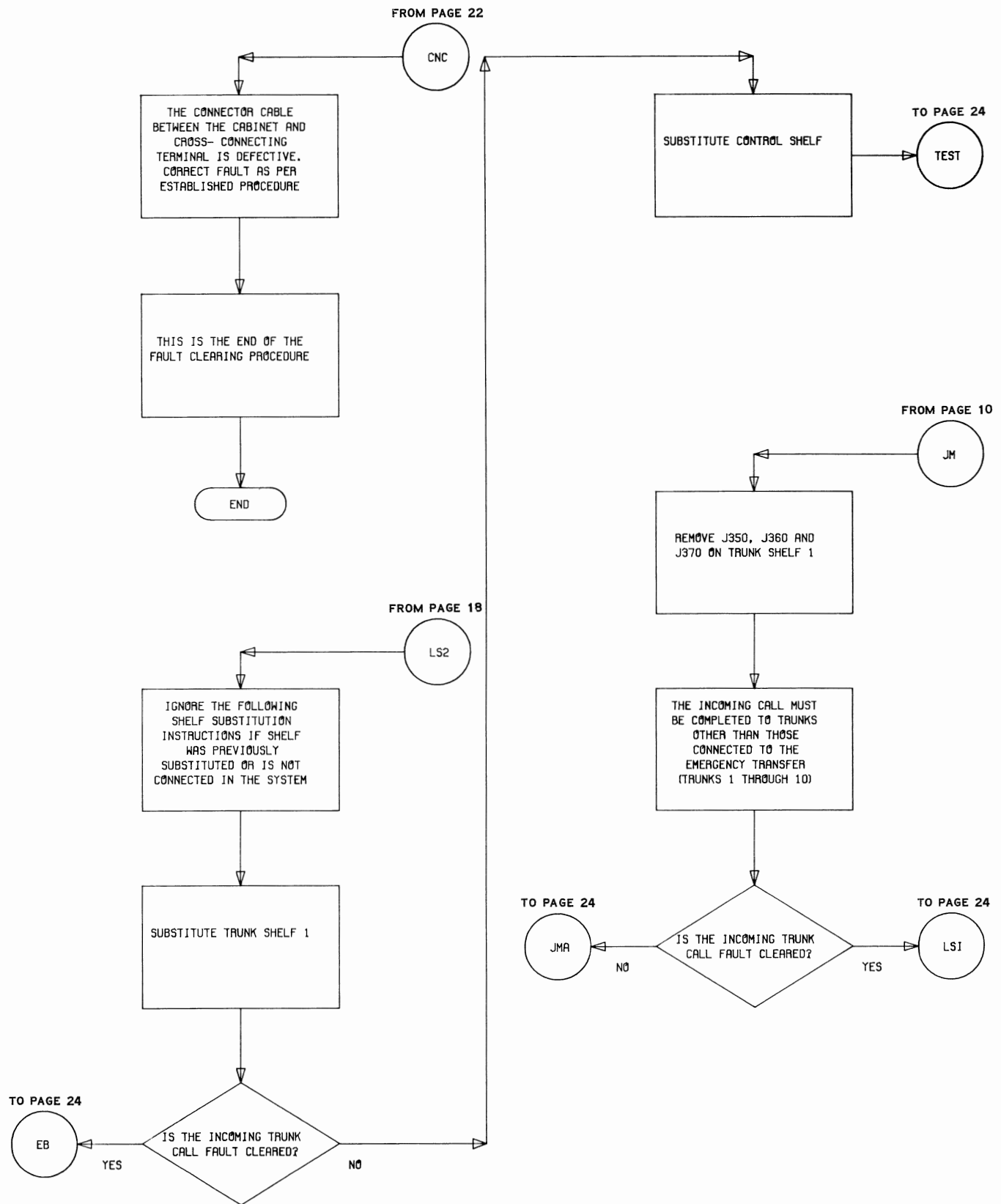
Flowchart 1 (Cont)



Flowchart 1 (Cont)



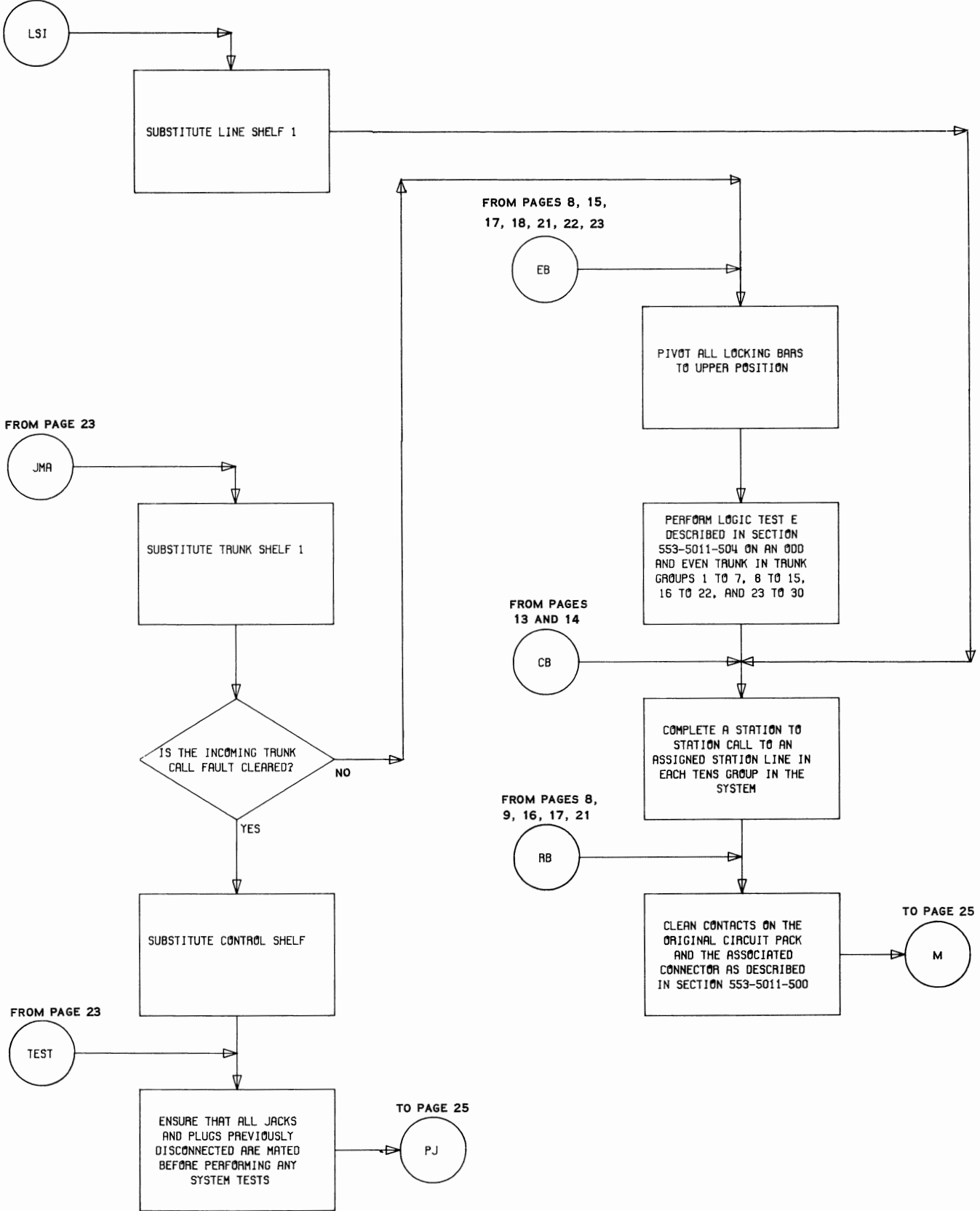
Flowchart 1 (Cont)



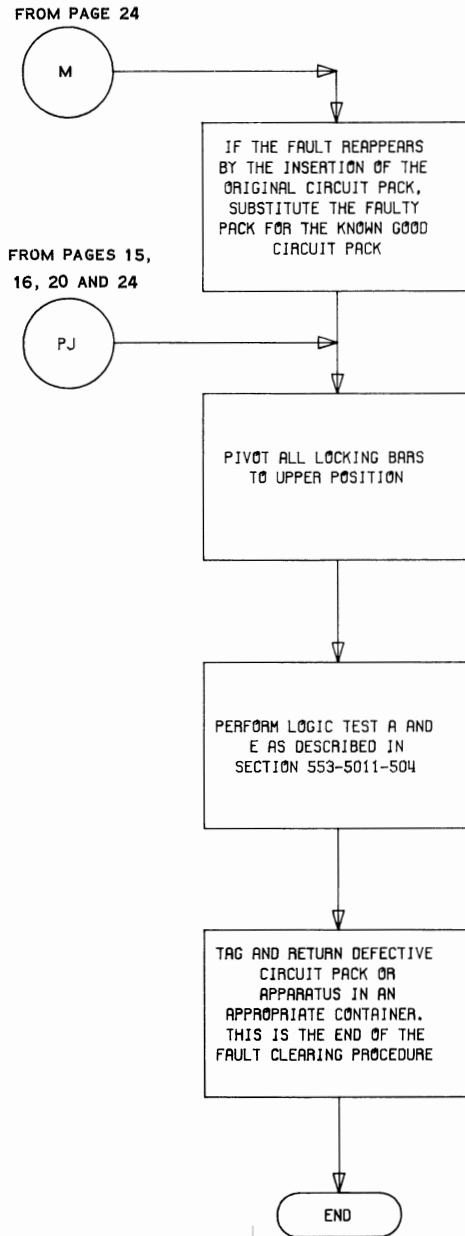
Flowchart 1 (Cont)

SECTION 553-5011-514

FROM PAGES 10,
11 AND 23



Flowchart 1 (Cont)



Flowchart 1 (Cont)