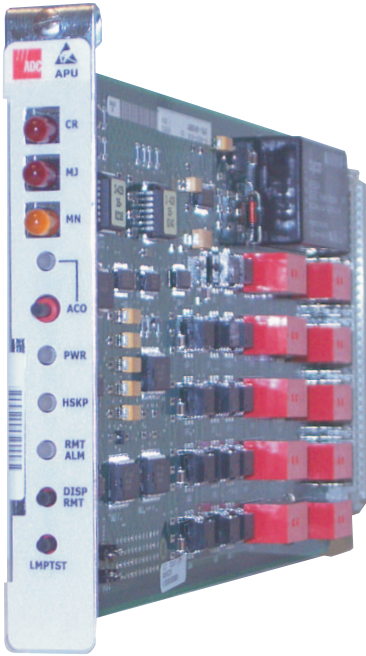


# QUICK INSTALLATION



## LPS-APU-L1 ALARM PROCESSOR UNIT

---

# THE LPS-APU-L1

The LoopStar Alarm Processor Unit LPS-APU-L1 provides an interface between the Shelf Controller Unit (SCU) and the customer alarm-reporting circuitry. It includes the following features.

- Critical, Major, and Minor alarm indicators and contacts for the chassis
- Visual and audible alarm relays
- Monitors office battery inputs and up to eight housekeeping (HSKP) alarm inputs
- Alarm cutoff (ACO) for audible alarm relays



**Copies of this publication (LTPS-QI-8055-xx) can be downloaded from the ADC website at [www.adc.com](http://www.adc.com). To order a hard copy, please contact your sales representative.**

## SPECIFICATIONS

---

<b>Operating Temperature</b>	-40°F to +185°F (-40°C to +85°C)
<b>Operating Humidity</b>	5% to 95% non-condensing
<b>CO Supply</b>	-48 Vdc nominal (-42.5 to -56.5 Vdc)
<b>Maximum Power Consumption</b>	7.5 W (All LEDs and relays active)
<b>Mounting</b>	LoopStar chassis
<b>Dimensions</b>	
Height	4.835 in.
Width	0.710 in.
Depth	9.664 in.
Weight	0.542 lbs.

---

---

# 1 INSTALLATION

Install the LPS-APU as follows:

- 1 Locate the APU mounting slot on the far right edge of the chassis.
- 2 Align the edges of the unit with the card guides in the chassis and push the LPS-APU into the chassis until it is firmly seated. If there is excessive resistance, remove the module and check for improper alignment or obstructions.
- 3 Secure the LPS-APU to the chassis with the screw provided.

# 2 POWER-UP SEQUENCE

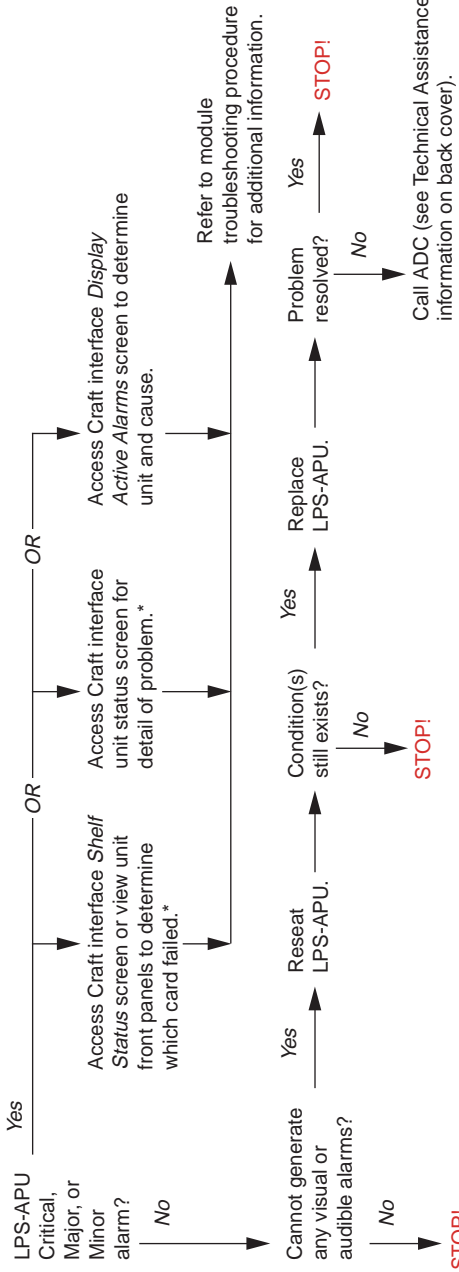
When the LPS-APU-L1 powers up, do the following:

- 1 Check the PWR LED located on the front panel.
  - a If the PWR LED lights green, both the A and B power sources are working properly. Proceed to Step 2.
  - b If the PWR LED lights red or is off, check the power sources. If they are both supplying -48 Vdc to the chassis at the power terminal block, the LPS-APU is defective. Remove the LPS-APU and repeat this procedure with a new unit.
- 2 Press the LMPTST pushbutton.
  - a If all the LEDs light, the installation is complete.
  - b If any LED does not light on the LPS-APU nor on the line cards in the chassis, the unit is defective. Remove the LPS-APU and repeat this procedure with a new unit.

*Continued*



## LPS-SCU Troubleshooting Flowchart

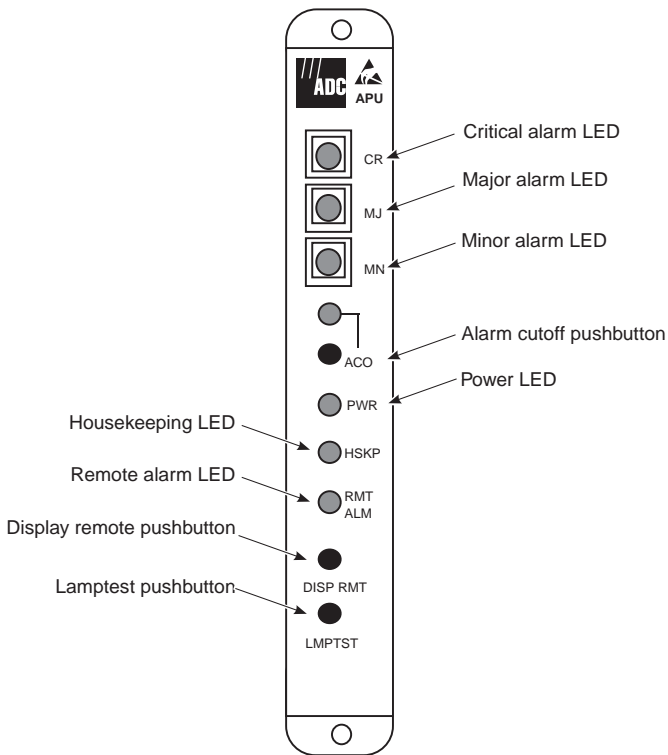


\*Refer to the appropriate unit user manual for an explanation of front-panel indications and Craft interface screen content.

# 3

## FRONT-PANEL OPERATION

The LPS-APU front panel is shown below. Functional descriptions of its indicators and controls are listed in Table 1.



S0277-A

**Table 1.** LPS-APU Front-Panel Operations

<b>Indicator</b>	<b>Description</b>
CR LED	
Red	Critical alarm exists on the system.
MJ LED	
Red	Major alarm exists on the system.
MN LED	
Yellow	Minor alarm exists on the system.
ACO LED	
Green	Some active audible alarm are being suppressed.
PWR LED	
Red	One of the power feeds is out of operation.
Green	Normal operation.
Off	Power is off.
HSKP LED	
Yellow	Housekeeping alarm is active at the near end.
RMT ALM LED	
Yellow	Remote alarms exist on the system.
<b>Control</b>	
ACO pushbutton	Active audible alarm indication is turned off when pressed.
DISP RMT pushbutton	Local line units display the state of the LEDs on the remote line units, if supported.
LMPTST pushbutton	Tests all LEDs in the chassis when pressed.

## FCC Class A Compliance

This equipment has been tested and found to comply with the limits for a Class A digital device, pursuant to Part 15 of the FCC Rules. These limits are designed to provide reasonable protection against harmful interference when the equipment is operated in a commercial environment. This equipment generates, uses, and can radiate radio frequency energy and, if not installed and used in accordance with the instruction manual, may cause harmful interference to radio communications. Operation of this equipment in a residential area is likely to cause harmful interference in which case the user will be required to correct the interference at his own expense.

## Limited Warranty

Product warranty is determined by your service agreement. Contact your sales representative or Customer Service for details.

## Modifications

Any changes or modifications made to this device that are not expressly approved by ADC DSL Systems, Inc. voids the user's warranty.

All wiring external to the products should follow the provisions of the current edition of the National Electrical Code.

## Standards Compliance

This equipment has been tested and verified to comply with the applicable sections of the following safety standards:

- GR 63-CORE - Network Equipment-Building System (NEBS) Requirements
- GR 1089-CORE - Electromagnetic Compatibility and Electrical Safety
- Binational standard, UL-1459 Third Edition/CSA C22.2 225-M90: Safety of Information Technology Equipment

## Trademark Information

ADC is a registered trademark of ADC Telecommunications, Inc. HiGain is a registered trademark of ADC DSL Systems, Inc. Other product names mentioned in this installation guide are used for identification purposes only and may be trademarks or registered trademarks of their respective companies.

## Copyright Information

© 2003 ADC DSL Systems, Inc. All rights reserved. Information contained in this document is company private to ADC DSL Systems, Inc., and shall not be modified, used, copied, reproduced or disclosed in whole or in part without the written consent of ADC.

## ADC DSL Systems, Inc.

14402 Franklin Avenue  
Tustin, CA 92780-7013  
Tel: 714.832.9922  
Fax: 714.832.9924

Product Catalog: LPS-APU-L1  
CLEI: SOC3DD0D  
Document: LTPS-QI-8055-01

## Technical Assistance

Tel: 800.366.3891 x73223  
Tel: 952.917.3223  
Fax: 952.917.3244  
Email: [wsd\\_support@adc.com](mailto:wsd_support@adc.com)



1256344

February 28, 2003