

HIGAIN INTERNATIONAL SERIES UNIVERSAL TERMINATION UNIT PROGRAMMING ADDENDUM 700-040-100-01

Model	List Number	Part Number
UTU-804	1	150-1420-34

1. Overview

- 1.1** The information in this addendum applies to the following PairGain® HiGain™ International Series Universal Termination Unit (UTU):

UTU-804 List 1: An LTU/NTU-programmable HDSL line unit with G.703 and V.35 interfaces. (This unit was previously named the ETU-804.)

- 1.2** This addendum is to be used with the following PairGain HiGain International Series Line and Network Termination Units technical practice:

LTU-804 and NTU-804 List 1: Section 700-804-100, Revision 03.

The LTU/NTU-804 practice covers common topics such as HDSL transmission and unit powering, which are directly applicable to the UTU-804 Universal Termination Unit. The practice also describes operation of the G.703 and V.35 ports.

- 1.3** Refer to the "Product Features" section of this practice for a description of the differences between the UTU-804 and the LTU/NTU-804 HDSL units.
- 1.4** The current software release is version 2.x. This requires that software release version 2.x be installed at both ends of the HDSL circuit (at both the LTU and the NTU).



Software release version 2.x is not backwards compatible with software release version 1.13. See the *HiGain International Series Line and Network Termination Unit's Technical Practice, LTU/NTU-804/5, "Firmware Download Utility" section, for instructions on downloading the latest software.*

2. Product Features

- 2.1** The UTU-804 is part of the HiGain International Series of ETSI-compliant HDSL transmission systems. Features of the UTU-804 are:

- One 2048 kbps G.703 E1 interface port.
- One Nx64 kbps (2048 kbps maximum) V.35 serial data port.
- Functionality identical to the LTU/NTU-804, with differences noted in Section 2.2.



The factory default setting for the UTU-804 is as an NTU (slave). When connecting two UTU-804 units, you must log in to the Console menu to change the setting of one unit to LTU (master).

- Operates with ETU-85x integrated desktop units or LTU/NTU-80x HDSL cards.

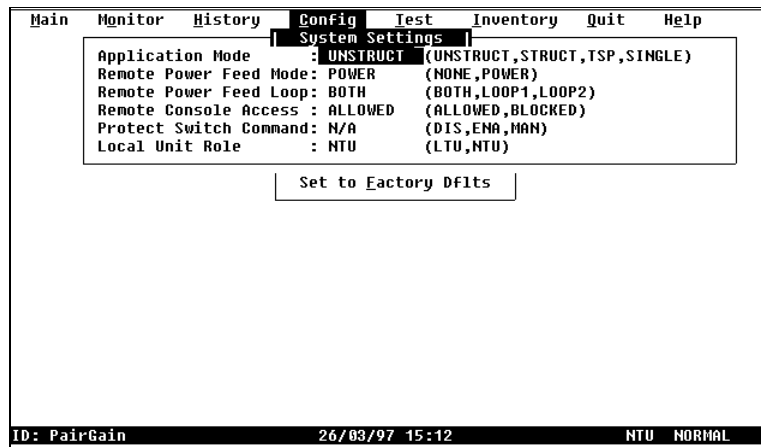
2.2 The UTU-804 differs from the LTU/NTU-804 in the following areas:

- The UTU-804 can be programmed to function as either an LTU (master) or NTU (slave) HDSL unit (by using the *Local Unit Role* selection in the System Settings menu).
- The UTU-804 does not provide line power to other HDSL units. It can, however, receive line power from other HDSL cards equipped with a line feed power supply (such as LTU-80x HDSL cards).

3. Programming the UTU-804

3.1 To program the UTU-804 to function as either an LTU or NTU:

- 1 Log in to the Console menus on the UTU-804.
- 2 Press <C> on your keyboard from the Main menu to display the Config drop-down menu.
- 3 Press <S> to display the System Settings menu:



- 4 Use the arrow key to select *Local Unit Role*.
- 5 Press the <spacebar> to select either *NTU* or *LTU*.
- 6 Press <Return> twice to confirm your settings. An audible "beep" will indicate that the new setting was accepted.

The Local Unit Role setting for your UTU-804 is reflected in the lower right corner of the screen as either LTU or NTU.

3.2 For all other settings, refer to the LTU/NTU-804 technical practice.

©Copyright 1997 PairGain Technologies, Inc.

PairGain is a registered trademark, and HiGain is a trademark of PairGain Technologies, Inc.